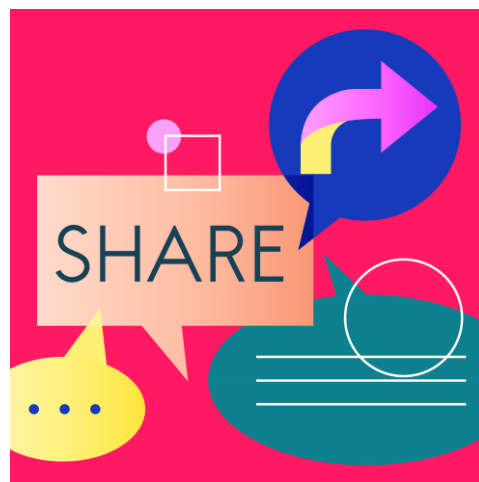




Schools' Information Sharing Meeting 19 December 2023



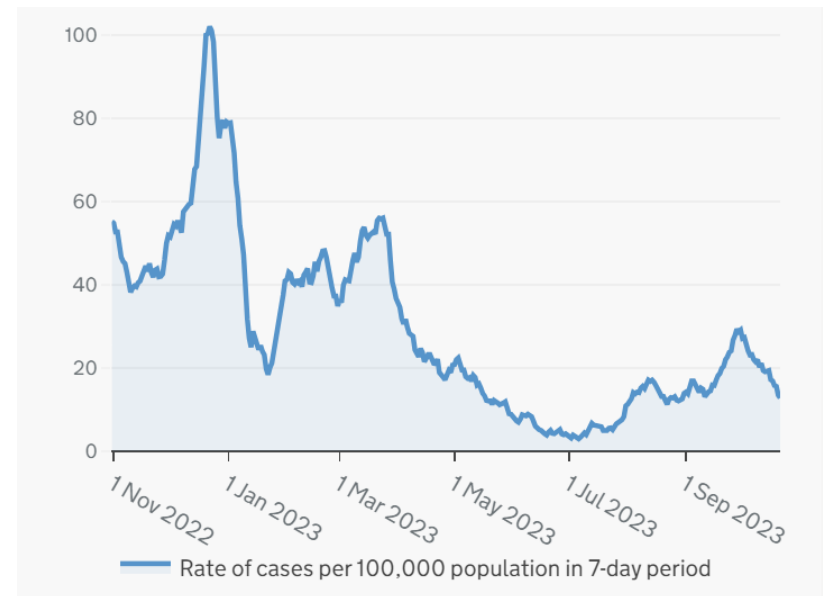
Oxfordshire Covid Data

Oxfordshire Covid Cases
(Coronavirus in the UK)

[Cases in Oxfordshire | Coronavirus in the UK \(data.gov.uk\)](#)

The 7-day rolling average rate of daily positive Covid-19 cases per 100,000 was **12.8** on the 8 December 2023.

This has **increased** from the previously reported rate of **7.9** per 100,000 two weeks previously.





‘Wraparound’ childcare

- The government is working to deliver its ambition for all parents of primary school aged children aged 4 to 11 to access ‘wraparound’ childcare in their local area between 8am and 6pm. Wraparound childcare as the name suggests, refers to childcare that ‘wraps’ around the conventional school day and is often referred to as breakfast clubs, after-school clubs.
- Oxfordshire County Council have been allocated funding from the DfE for the expansion of wraparound childcare. We would therefore ask if you could please complete the following short survey to help us map current provision and gauge the level of interest from schools who are considering opening new or expanding their existing provision with the support of start-up funding.
- To ensure we capture the full picture across Oxfordshire we would ask if you could please complete the survey **by 5pm on 19th December 2023**. We will be contacting any non-respondents after this date for completion.
- To access the survey please use the following link:
<https://forms.office.com/e/Q8eqLcgjF4>



Healthwatch Oxfordshire's priorities for 2024-25

Who are Healthwatch Oxfordshire?

Healthwatch Oxfordshire is an independent charity for people who use health and social care services. We find out what matters to local people about their health and care and make sure their views are heard by the people who make decisions about those services.

What do you think Healthwatch priorities should be? Please take the time to complete our survey.

Your feedback is important.

<https://www.smartsurvey.co.uk/s/priorities2024-25/>

OxWell 2023 Student Survey

The OxWell Student Survey 2023, looks at young people's health and wellbeing.

The key messages include:

- A high proportion of students have body image issues
- One quarter have experienced a mental health problem in recent months
- Self-harm most commonly has a first occurrence at age 11
- 43% of Y13 had had serious thoughts about self-harm or taking an overdose



[2023 Results : OxWell](#)



Christmas 2023 in Oxfordshire

- See **The Light at Blenheim Palace**. 17th November 2023 – 1st January 2024 [Ticket Options \(seetickets.com\)](https://www.seetickets.com)
- **Oxford Christmas Market**. 30th November – 23rd December 2023. This year the Oxford [Christmas Market](#) returns to Broad Street.
- Experience Christmas at the **Castle & Prison**. 25th November to 23rd December 2023. Take the kids to meet Santa somewhere they never thought he'd go... the historic [Castle and Prison](#) in the centre of Oxford.
- Be **Serenaded by G4 in Oxford**. 23rd December 2023. [Tickets for G4 Christmas – Oxford Town Hall 2023 in Oxford from Ticketbooth Europe](#)
- Have Your Own **Polar Express Moment in Didcot**. Thursday 21st, Friday 22nd and Saturday 23rd December 2023. [Didcot Railway Centre](#)
- Take a candlelit tour of **Greys Court**. 25th November 2023 – 5th January 2024. Greys Court is a stunning [National Trust site](#) and always a lovely day out, but it's especially warm and welcoming at Christmas. See the decorated trees and marvel at the twinkling fairy lights to feel extra festive.
- Wonder at Christmas at **Waddesdon Manor**. 22nd November 2023 to 1st January 2024. In the grounds of this [Rothschild country mansion](#), lose yourself to the warmth and magic of a traditional Christmas, followed by the most spectacular light show.





Date of next meeting:



16 JANUARY 2024



9.00AM